



tangent

tangent

# PRESTIGE

---

## LOUNGE SERIES

LRS

# tangent | PRESTIGE

The Tangent Prestige speaker is the essence  
of what Tangent is - **Danish lifestyle audio!**

The slim curved form with beautiful high gloss finish and high end technology makes the Tangent Prestige a feast for the eye and the ear. The Tangent Prestige is a speaker that you don't want to hide away, but place in the prime spot in your favorite room where you can enjoy the relaxed sound quality that will make you want to listen to your favorite music all day.

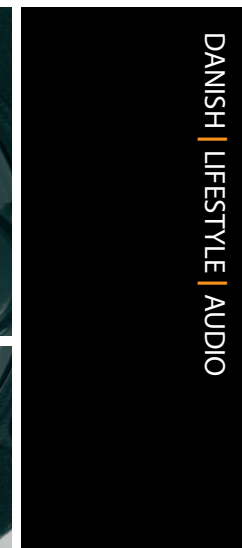
The uniform sound dispersion from the Prestige allows you enjoy the music wherever you are in your living room, the high efficiency and easy load means that you can use any kind of amplifier you may prefer with the Prestige. The Tangent Prestige is a speaker that everybody can enjoy for years to come.

The curved cabinet with internal bracing and thick cabinet walls virtual eliminate cabinet resonance and provides a stable foundation for the drivers. For

the treble in the Tangent Prestige we use the Scan Speak Illuminator D3004 high end tweeter. With the ground breaking Air Circ Magnet system, magnet copper ring, specially design back chamber, specialized coating and large-roll surround this is one of the very best tweeters available.

To complement the Scan Speak tweeter we use custom designed woofers with an open die cast frame and very light well balanced mixed fiber cone. To ensure that the drives work perfectly together we use a simple time coherent low loss crossover. We have put high focus on the tuning of the prestige crossover, this has resulted in well balanced natural sounding Tangent prestige speaker that is very easy to drive for any amplifier.

Tangent Prestige - sublime pleasure...!



PRESTIGE

DANISH | LIFESTYLE | AUDIO

tangent Systems PRESTIGE



### Features Prestige

- AirCirc Magnet System
- Large Roll Surround (LRS)
- Time Coherent Crossover
- Wide Uniform Sound Dispersion
- Mixed Fibre Cone
- Open Die cast Woofer Chassis
- Piano Lacquer
- Low Resonance Cabinet

### Specifications

System:	2½ way bass refleks
Woofer:	2 X 165 mm mixed fiber cone
Tweeter:	26 mm ScanSpeak Illuminator D3004
Rec. amplifier:	20-200 watt
Impedance:	4-8 ohm
Sensitivity:	(1W-1M): 89 dB
Frequency range:	+/- 3 dB: 29Hz - 33Khz
Terminals:	Bi-wiring
Weight	31 kg.
Dimensions	1250 x 215 x 300
Speaker mounted on Aluminium/diecast base	







*"When sound, design  
and choice of lifestyle  
matters"*

# tangent LOUNGE L6 & L26

## Features L6/L26

- Large Roll Surround (vifa)
- Mixed fibre cone
- Open cast iron woofer chassis
- Time coherent crossover
- Wide uniform sound dispersion
- Piano lacquer

## Specifications L6

System:	2 way bass refleks
Woofer:	165 mm mixed fiber cone
Tweeter:	26 mm Vifa LRS
Recomended amplifier:	20-120 watt
Impedance:	4-8 Ohm
Sensitivity (1W-1M):	87 dB
Frequency range +/- 3 dB:	33Hz - 27Khz
Terminals:	Bi-wirring
Spikes:	No
Weight:	6,50 KG
Dimensions:	310 x 200 x 280mm

## Specifications L26

System:	2½ way bass refleks
Woofer:	2 X 165 mm mixed fiber cone
Tweeter:	26 mm Vifa LRS
Recomended amplifier:	20-200 watt
Impedance:	4-8 Ohm
Sensitivity (1W-1M):	89 dB
Frequency range +/- 3 dB:	31Hz - 27Khz
Terminals:	Bi-wirring
Spikes:	Yes Adjustable heavy duty.
Weight:	17,60 KG
Dimensions:	915 x 200 x 280mm



# tangent LOUNGE L6 & L26

The Lounge series gives you flexibility and performance in a traditional design

## FIRST-RATE DESIGN AND TECHNOLOGY

The Tangent Lounge loudspeaker range is closely related to the Tangent Prestige speaker. The elegant piano-finish on the cabinet has been maintained, only this time it is applied to a more traditional, squared cabinet. The Tangent Lounge speaker features the same excellent bass and midrange driver units, partnering here with a Vifa tweeter. The Vifa tweeter is built on excellent technological principles such as Large Roll Surround. The Tangent Lounge represents outstanding sound at an affordable price point.

Tangent Lounge is not a speaker for an egotistical listener. It spreads its sound widely and evenly, allowing it to be enjoyed from all over the listening space. At the same time, the Tangent Lounge does so while placing minimal demands on the amplifier to which it is connected. Special amplifiers are not required to drive the speakers.

Some of the finest cabinetmakers there are work for

Tangent, which the Lounge cabinet reflects. This first-class craftsmanship comes to life in the quality of the cabinet, where the elegant design is followed up by intense demands on detail: tolerances in joints, varnishing quality, uniformity in manufacturing, and more.

The excellent sound quality of the loudspeakers in the Tangent Lounge range is achieved by the usage of high-end loudspeaker units. Tweeters from Vifa (of Denmark) are built on experiences gained from the Scan Speak Revelator, with Large Roll Surround and rear chamber.

The same unique midrange and bass driver units are employed in the Tangent Lounge as in the Tangent Prestige. This custom membrane is made of a specially-selected paper/wood fibre material. It has an optimal combination of lightness, strength and control. The midrange and bass chassis features an open design, which ensures proper circulation behind the driver unit. A loss-centring mounting, together with the other features has already put the Prestige on the fast track to success.





Tangent A/S

Drejervej 2

7490 Aulum

Denmark

Tel.: +45 9641 1500

Fax: +45 9747 2937

Email: [info@tangent-audio.com](mailto:info@tangent-audio.com)

[www.tangent-audio.com](http://www.tangent-audio.com)

DANISH | LIFESTYLE | AUDIO

All technical specifications are subject to alter according to technical improvements

Tangent is a registered trademark - Denmark

02966